



USER MANUAL

EVALUATION BOARD/KIT FOR RADIO
MODULES METIS-E, OLIS-E AND
TARVOS-E

2609059281001,
2609059282001, 2609059283001

VERSION 1.2

DECEMBER 1, 2025

WÜRTH ELEKTRONIK MORE THAN YOU EXPECT

MUST READ

Check for firmware updates

Before using the product, make sure you use the most recent firmware version, data sheet, and user manual. This is especially important for Wireless Connectivity products that were not purchased directly from Würth Elektronik eiSos. A firmware update on these respective products may be required.

We strongly recommend including the possibility of a firmware update in the customer system design.

Contents

1	Abbreviations	3
2	Revision history	4
3	Supported radio modules	5
4	Functional description	7
4.1	Taking into operation	7
5	Development board	8
5.1	Block diagram	8
5.2	Jumpers	9
5.3	Connectors and pin headers	11
5.3.1	CON1	12
5.3.2	CON2	13
5.3.3	CON3	15
5.3.4	CON4	15
5.3.5	CON5	15
5.4	Buttons	16
5.4.1	RESET button	17
5.4.2	Wake up button	17
5.5	Function blocks	17
5.5.1	Power supply	17
5.5.1.1	Bus powered, power supply through USB	17
5.5.2	JP1 - Current measurement	17
5.5.3	UART via USB	17
5.5.4	UART direct	17
5.5.5	LFXO crystal	18
5.5.6	Programming interface	18
5.6	Schematic	19
5.7	Layout	20
5.8	Bill of materials	22
6	Marking	24
6.1	Lot number	24
7	Regulatory compliance information	25
7.1	European Conformity	25
7.2	FCC	25
7.3	Exemption clause	25
8	References	26
9	Important notes	27
10	Terms of Use for Würth Elektronik eiSos GmbH & Co. KG EV-Boards, evaluation kits and evaluation modules	27

11 Legal notice	29
12 License terms	30

1 Abbreviations

Abbreviation	Name	Description
COM Port	Communication Port	
EV (Board)	Evaluation (Board)	
ESD	Electro Static Discharge	
FTDI	Future Technology Devices International	USB to serial converter chip
GND	Ground	Ground signal level that corresponds to 0 V
GPIO	General Purpose Input/Output	
HIGH	High signal level	Digital voltage level that is detected as high by the module
JTAG	Joint Test Action Group	Flash und debug interface
LDO	Low Dropout	Low dropout voltage regulator
LED	Light Emitting Diode	
LFCLK	Low frequency clock	
LFXO	Low frequency crystal oscillator	
LOW	Low signal level	Digital voltage level that is detected as low by the module
PC	Personal Computer	
PCB	Printed Circuit Board	
RF	Radio frequency	Describes everything relating to the wireless transmission
SMA	Sub Miniature version A	
SWD	Serial Wire Debug	Flash und debug interface
UART	Universal Asynchronous Receiver Transmitter	Serial communication with the radio module
USB	Universal Serial Bus	
VDD	Voltage Drain Drain	Supply voltage

2 Revision history

Manual version	HW version ¹	Notes	Date
1.0	1.0.	<ul style="list-style-type: none">Initial version.	September 2024
1.1	1.0	<ul style="list-style-type: none">Added information for Olis-e and Tarvos-e.	June 2025
1.2	1.0	<ul style="list-style-type: none">Update table Content Metis-e EV-Kit	November 2025

¹The table shows hardware version of the EV-Board. For the actual version of the module refer to [1].

3 Supported radio modules

The EV-Board described in this manual can be used to evaluate the following products:

WE order code	Description
2609051183000	Metis-e radio module
2609051182000	Olis-e 868MHz radio module without FW
2609051181000	Tarvos-e Radio module

Table 3: Compatibility

The EV-Kit can be ordered using the following order code:

WE order code	Description
2609059283001	EV-Kit Metis-e
2609059282001	EV-Kit Olis-e
2609059281001	EV-Kit Tarvos-e

Table 4: Order codes

Kit Content 2609059283001	Quantity
Evaluation board with Metis-e	1
<i>868 MHz antenna (2600130086)</i>	1
USB data cable USB-C	1
Packaging: cardboard box, ESD safe cover	1

Table 5: Content Metis-e EV-Kit

Kit Content 2609059282001	Quantity
Evaluation board with Olis-e	2
<i>868 MHz antenna (2600130086)</i>	2
USB data cable USB-C	2
Packaging: cardboard box, ESD safe cover	1

Table 6: Content Olis-e EV- Kit

Kit Content 2609059281001	Quantity
Evaluation board with Tarvos-e	2
868 MHz antenna (2600130086)	2
USB data cable USB-C	2
Packaging: cardboard box, ESD safe cover	1

Table 7: Content Tarvos-e EV- Kit

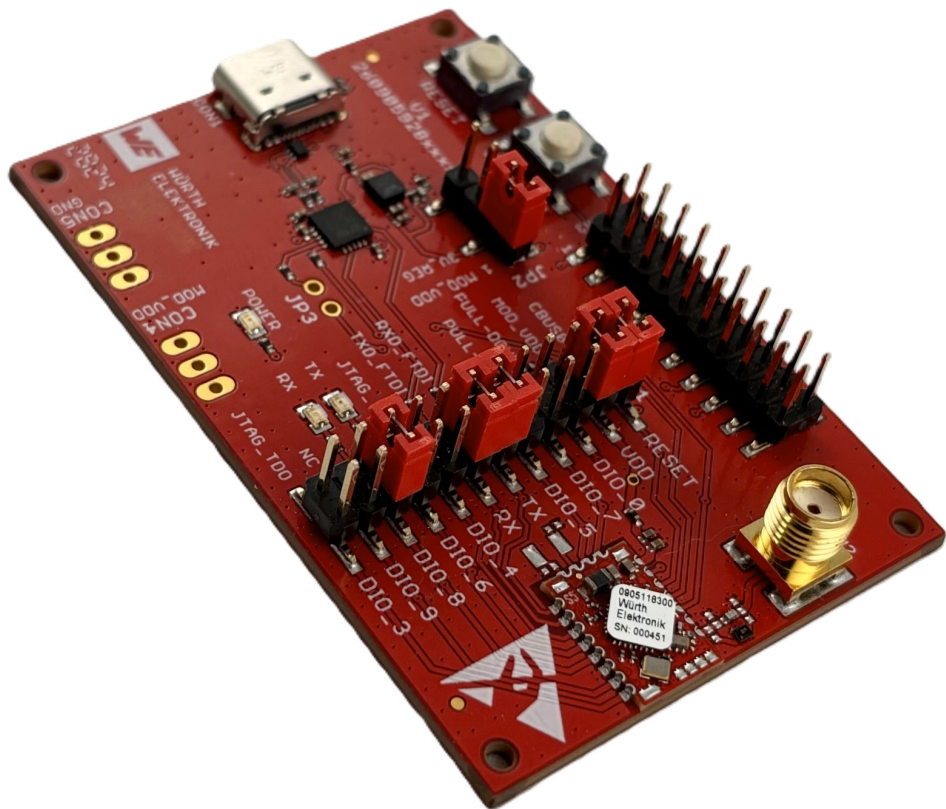


Figure 1: Photo of the EV-Board

4 Functional description

The EV-Board offers the user the possibility to develop hard- and software for the mounted radio module. It can be connected to a USB port of a PC.

For the connection to a microcontroller system, the development board is equipped with a multi-pin connector, which is connected to all pins of the radio module. Jumpers allow the module to be disconnected from components, such as the USB interface, when they are not required.

Refer to our YouTube channel:

www.youtube.com/user/WuerthElektronik/videos for video tutorials, hands-on activities, and webinars related to our products.

4.1 Taking into operation



When using the Olis-e EV-Board, the USB connector supplies power to the board. Communication with the module is not possible because the module does not have firmware.

To run the EV-Board, the jumpers must be placed on the default location as shown in figure 3. This helps to connect the module's UART to the FTDI USB-to-UART converter.

The corresponding FTDI driver package *FTDI driver package* has to be installed on your PC.

The next step is to connect the EV-Board to the PC via a USB cable. This will allow a COM port to be detected and installed on the PC. Check the Device Manager to find the COM port name of the EV-Board. A typical designation could be "COM12" on Windows systems or "/dev/ttyUSB0" on Linux systems.

The WE UART Terminal PC tool [2] or any other serial terminal program (like *Hterm* for Windows) must be executed and the corresponding COM port to be opened using the default settings of the mounted radio module. After the module has been powered through the USB jack or an alternative power supply, the reset button should be pressed to ensure a clean start-up of the module.

Refer to the Metis-e module's user manual for detailed, module specific quick start instructions [1].

Refer to the Tarvos-e module's user manual for detailed, module specific quick start instructions [3].

Refer to the Olis-e module's user manual for detailed, module specific information [4].

5 Development board

5.1 Block diagram

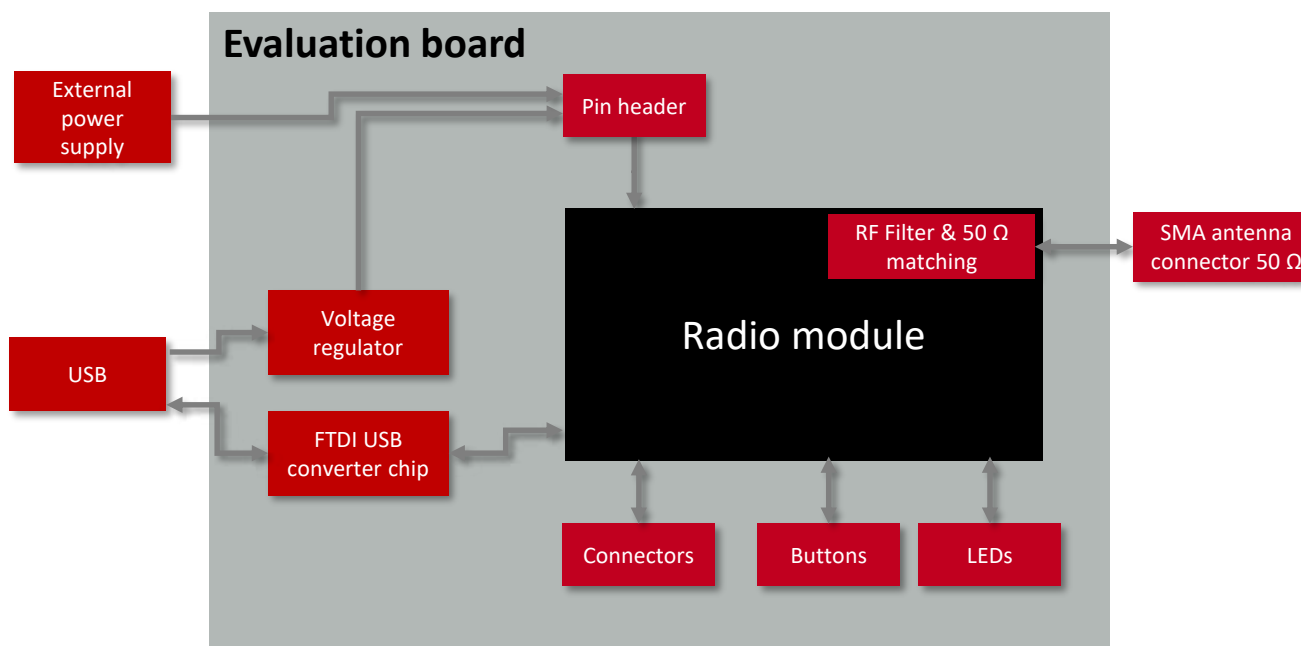


Figure 2: Block diagram



No antenna is integrated in the module. The EV-Kit contains an antenna that fits the SMA connector on the EV-Board.

5.2 Jumpers

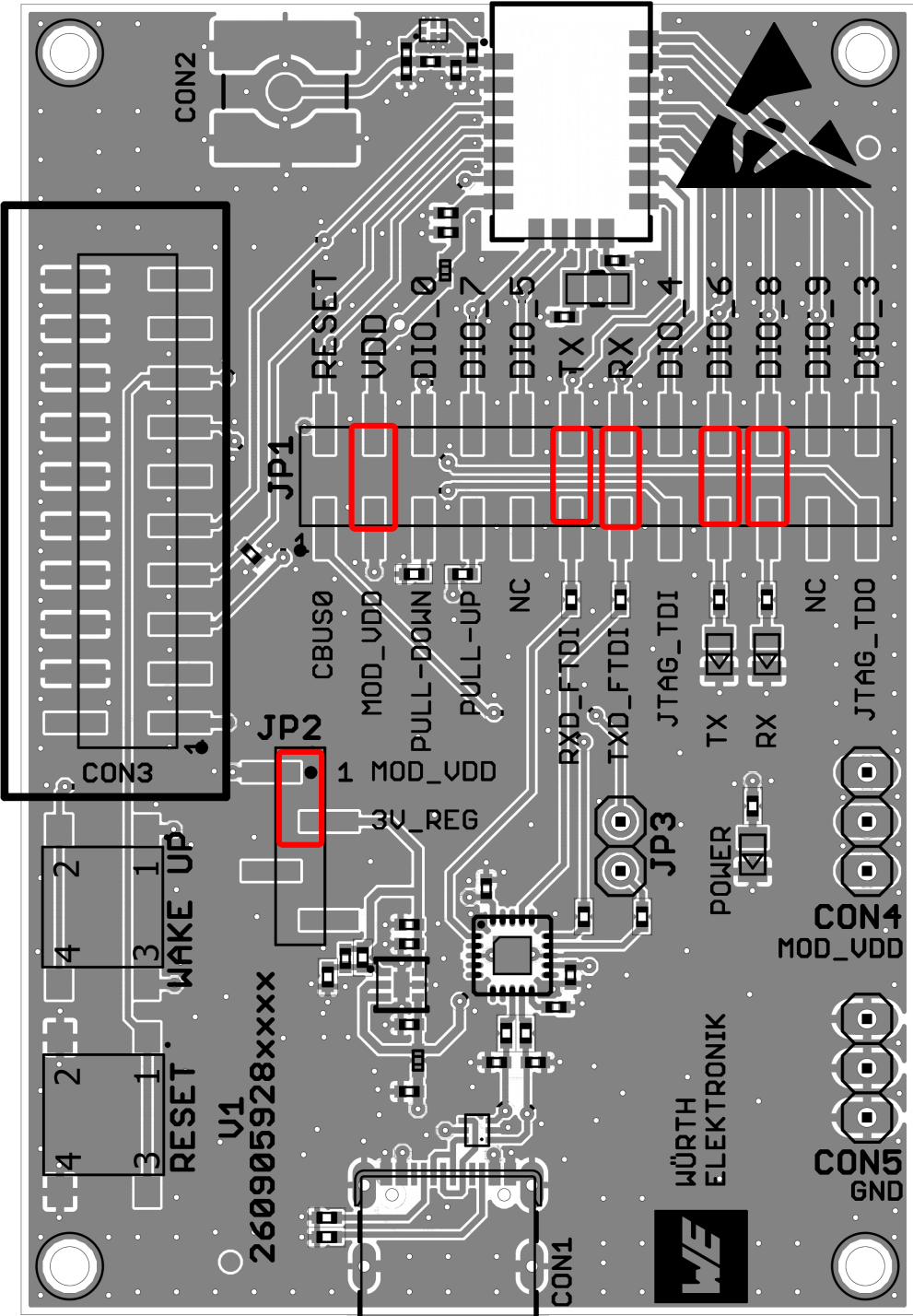


Figure 3: Jumpers, default placement

JP1 Pin	Function	JP1 Pin	Module function (pin)	Jumper set (default)
1	CBUS0-FTDI	2	/RESET (5)	No
3	JP2 Pin1 (LDO out or CON4) current measurement	4	VDD module (7)	Yes
5	Pull down	6	DIO_0 (6)	No
7	Pull up	8	DIO_7 (8)	No
9	Not conneted	10	DIO_5 (9)	No
11	RXD-FTDI	12	DIO_2/UTXD (12)	Yes
13	TXD-FTDI	14	DIO_1/URXD (13)	Yes
15	CON3 Pin5	16	DIO_4 (14)	No
17	LED1	18	DIO_6 (15)	Yes
19	LED2	20	DIO_8 (16)	Yes
21	Not connected	22	DIO_9/WAKEUP (18)	No
22	CON3 Pin13	23	DIO_3 (19)	No

Table 8: Jumper JP1: Module pins available and connectable to some standard functions

In table 8 the initial pin names of the chipset are used (and the pin number of the module). As this EV-Board is used for several firmware variants of the module, the functions are not fixed.

JP2 Pin	Function	JP2 Pin	Module function (pin)	Jumper set (default)
1	JP1 Pin3 toward VDD module and CON4	2	LDO output	Yes
3	Not connected	4	Not connected	No

Table 9: Jumper JP2: LDO separable



When using external power supply, Jumper JP2 Pin 1-2 shall be removed to avoid applying voltage to the output of the LDO. Pin headers CON4 and CON5 shall be used to source the EV-Board.

5.3 Connectors and pin headers

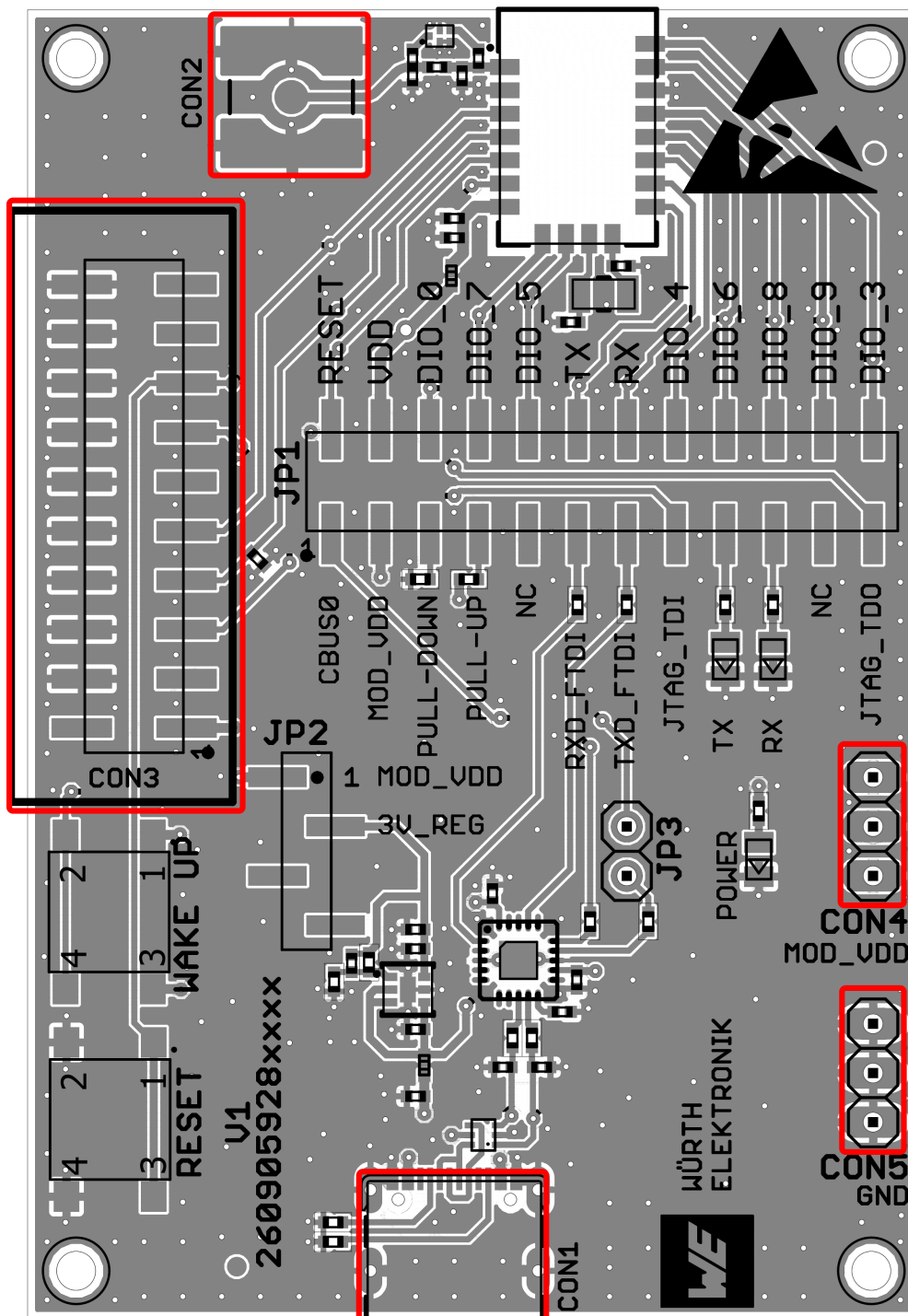


Figure 4: Connectors

Connector	Function
CON1	Micro-USB connector for host connection and VDD bus supply
CON2	SMA connector for external antenna
CON3	2×10 JTAG/SWD connector
CON4	External power supply VDD (not mounted)
CON5	External power supply GND (not mounted)

Table 10: Connector overview



When using external power supply Jumper JP2 Pin 1-2 shall be removed to avoid applying voltage to the output of the LDO. Pin headers CON4 and CON5 shall be used to source the EV-Board.



By default, CON4 and CON5 are not mounted.

5.3.1 CON1

Connector CON1 is a USB C connector which enables a connection to PC via standard USB C cable.

CON1	Function
	USB C connector for host connection and VDD bus supply

5.3.2 CON2

Connector CON2 (SMA connector) is used to connect an external antenna. For example, the 868 MHz antenna Hermippe-III 2600130086 can be used.

CON2	Function
Inner	RF signal
Outer	GND

The EV-Board allows the possibility to either connect directly to an antenna, or to go through a SAW filter. In delivery state, the filter is bypassed by C6, directly connecting CON2, as shown in figure 5.

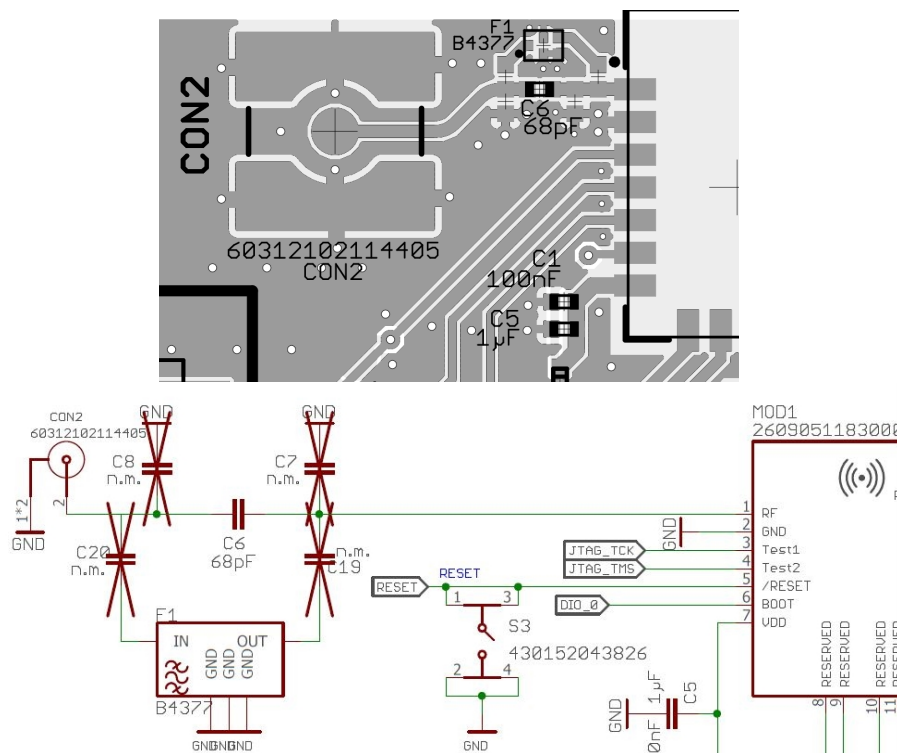


Figure 5: Example without filtering

To facilitate testing with additional filtering, a SAW filter is already assembled. Some soldering is needed to remove C6 and place C19 and C20 as shown in figure 6.

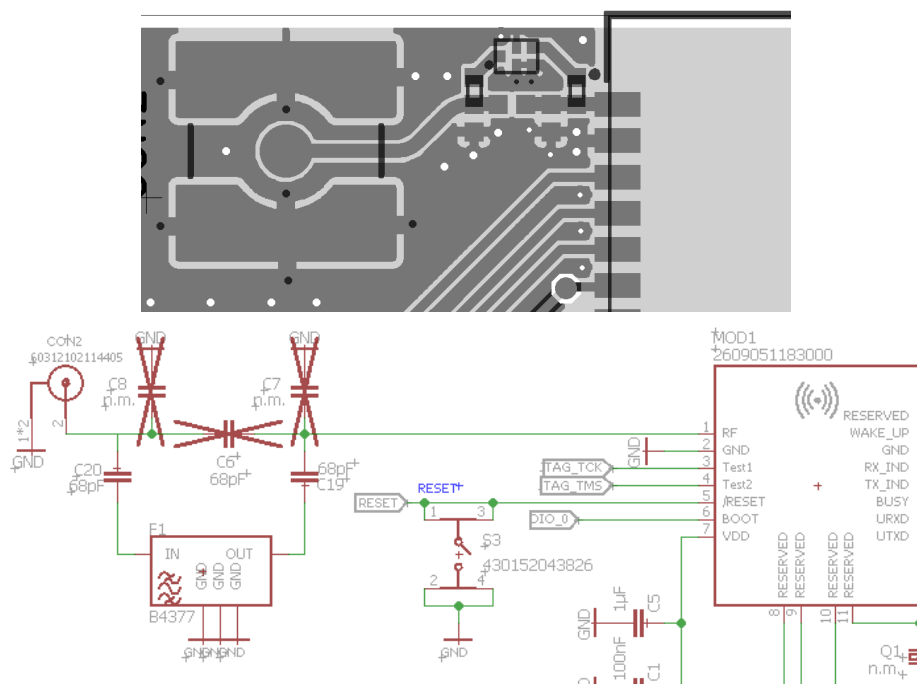


Figure 6: Example with filtering

5.3.3 CON3

Connector CON3 is the JTAG debugging interface.

CON3 Pin	CC1310	Function
1		<i>VDD</i>
7	<i>JTAG_TMS</i>	<i>Test2</i>
9	<i>JTAG_TCK</i>	<i>Test1</i>
15	RESET_N	<i>/RESET</i>
4,6,8,10,12,14,16,18,20		<i>GND</i>
2,3,5,11,13,17,19		Not connected

Table 11: Connector CON3

5.3.4 CON4

Pin header CON4 is a 3x1 pin header with 2.54 mm grid connected to *MOD_VDD* in the PCB. CON4 shall be used for external power supply.

5.3.5 CON5

Pin header CON5 is a 3x1 pin header with 2.54 mm grid connected to *GND* in the PCB. CON5 shall be used for external power supply.

5.4 Buttons

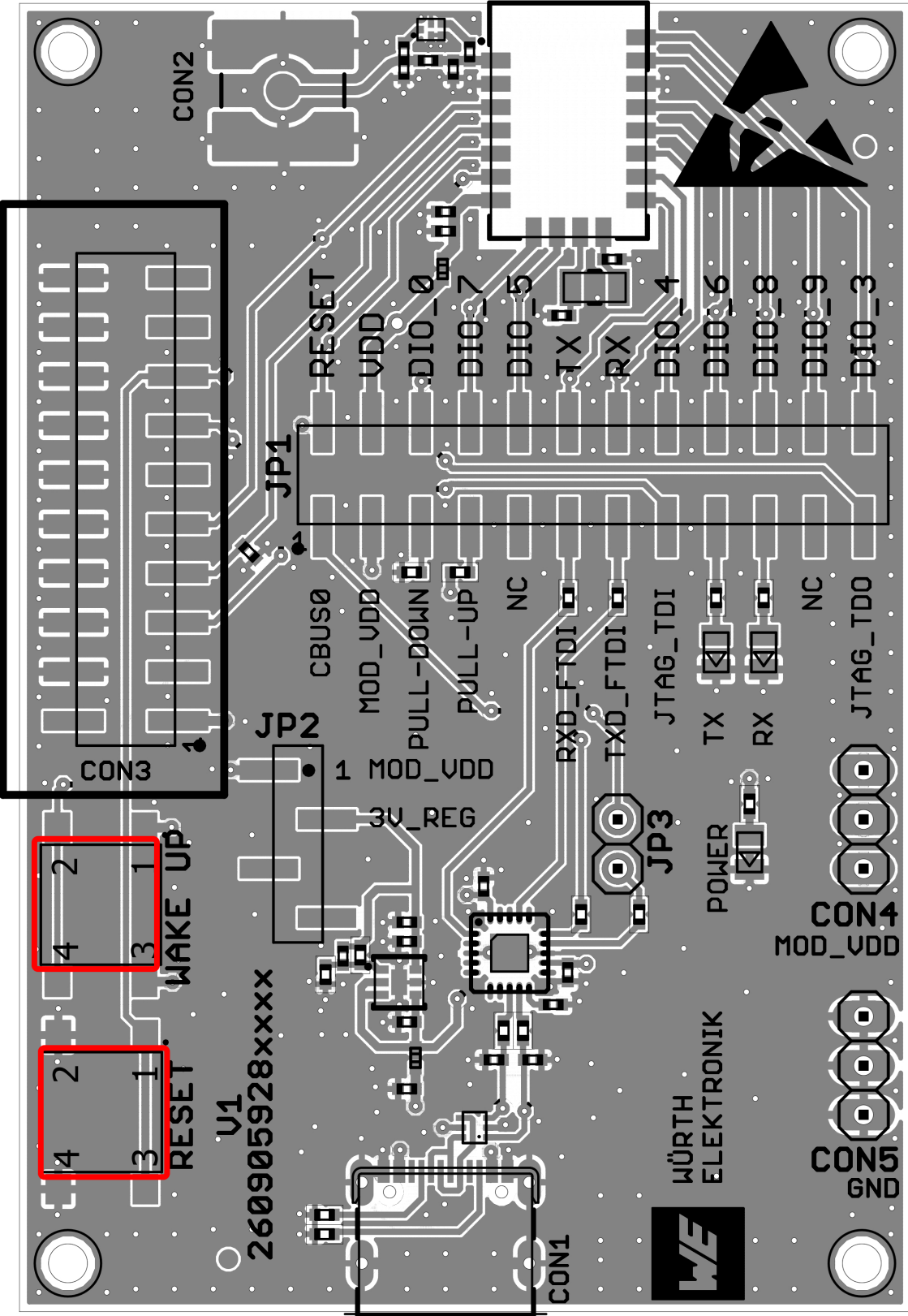


Figure 7: Buttons

5.4.1 RESET button

Internally, the active low reset input of the microprocessor is connected via an RC combination with the power supply to ensure a proper startup of the module. The module provides this */RESET* pin. On the EV-Board it is connected to button S3, marked as *RESET* on the PCB so that the module can be restarted properly by hand.

5.4.2 Wake up button

Internally, the wake up input of the microprocessor is pulled down (modules with firmware). On the EV-Board, the push button S1 connects this pin to modules positive power supply, generating a falling edge when releasing the button, which is needed to wake up the module. On the EV-Board the button is marked as *WAKE UP*.

5.5 Function blocks

5.5.1 Power supply

5.5.1.1 Bus powered, power supply through USB

The development board can be run via USB. The integrated voltage regulator reduces the connected USB voltage 5 V down to 3 V and supplies the remaining parts of the circuit. If the EV-Board is powered, the *Power LED* lights up.

5.5.2 JP1 - Current measurement

By default, the jumper JP1 pin 3-4 is set for normal operation. If a current meter is connected in place of the jumper, the power consumption of the radio module can be measured.

If the meter is not attached and the bridge is not set, the module will not receive a supply voltage. However, the power *Power LED* may be active, as it is connected prior to the current measurement bridge in order not to distort the module's power consumption.

5.5.3 UART via USB

The UART of the module can be connected to the USB converter by setting the bridge P1. In this case, it is available on the USB jack. With help of the installed FTDI-driver, the PC will provide a virtual COM port which can be used to communicate with the module.



The USB cable length must not exceed 3 meters.

5.5.4 UART direct

If a microcontroller is to be connected to the module, remove the jumpers 11-12, 15-16, 17-18 on P1. The UART of the host microcontroller can be attached directly on the pin header P1 (all even numbered pins). The module *RXD* line must be handled accordingly by your host (i.e.

pulled up while inactive and during module boot-up). The host must adhere to the I/O level compatibility values stated in the module's manual.

5.5.5 LFXO crystal

The standard Metis-e, Tarvos-e firmware does not use an external low-frequency crystal. Nevertheless, it is possible to mount one on the EV-Board. A 32.768 kHz (LFXO) crystal, 3.2 × 1.6 mm package, for example *WE-XTAL_WATCHCRYSTAL (830009706)*, can be placed on the EV-Board to position *Q1*. The needed load capacitance can be reached with capacitors *C15* and *C17*, 0402 package. As these pins support no functionality besides LFXO, these pins are not connected to a pin header.

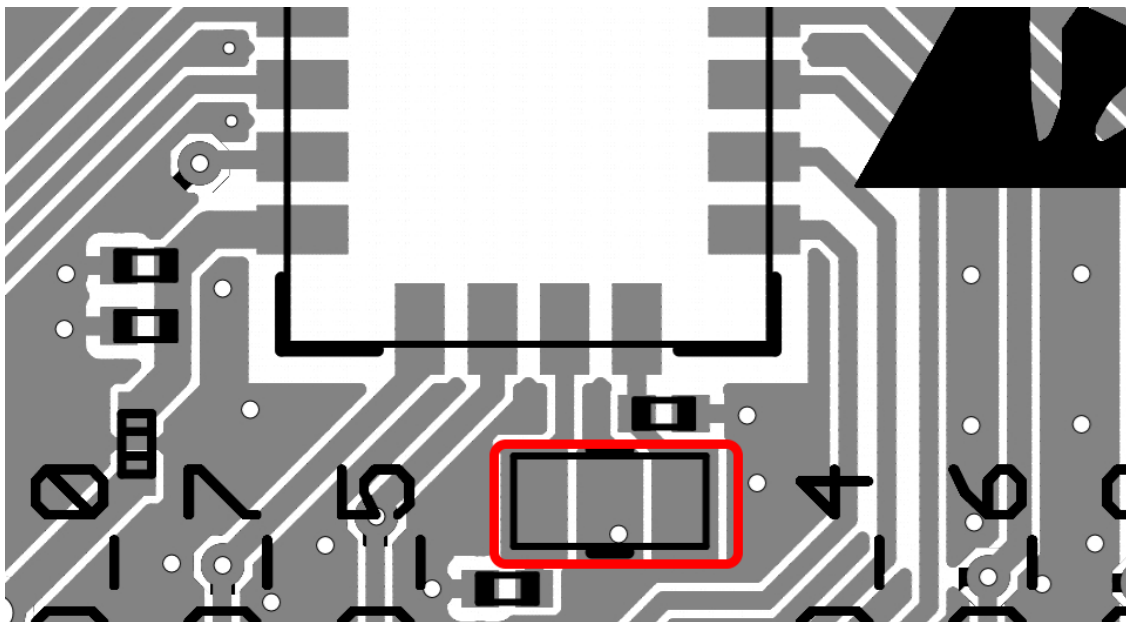


Figure 8: LFXO mounting



When using standard firmware with Metis-e, Tarvos-e, the external crystal is not needed. To enable use of the LFXO a custom firmware is required.

5.5.6 Programming interface

The EV-Board with CON3 provides a 2×10 pin connector to connect directly to a JTAG flash adapter, supporting JTAG 2 wire or JTAG 4 wire, used for development. Pin1 is marked on the PCB for correct mounting of the flash adapter. The recommended flash adapter is one of the "Segger J-Link" family.

5.6 Schematic

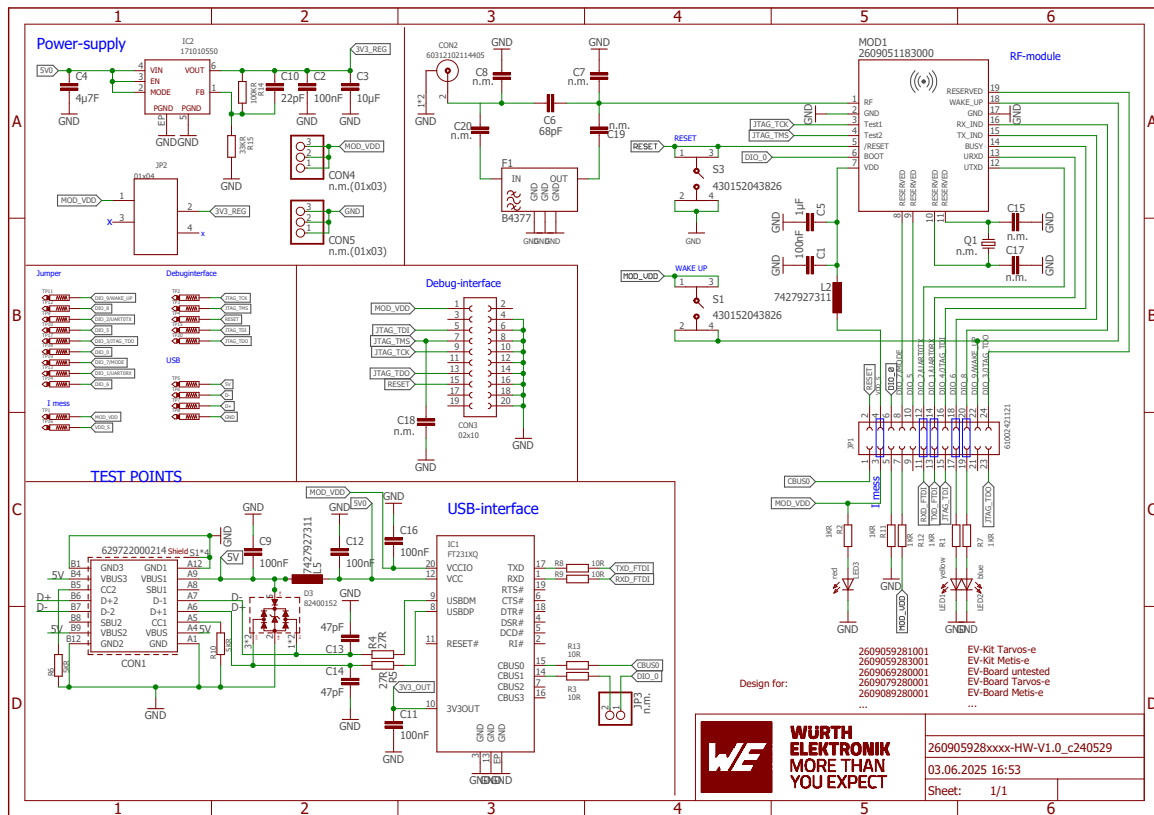


Figure 9: Reference design: Schematic

5.7 Layout

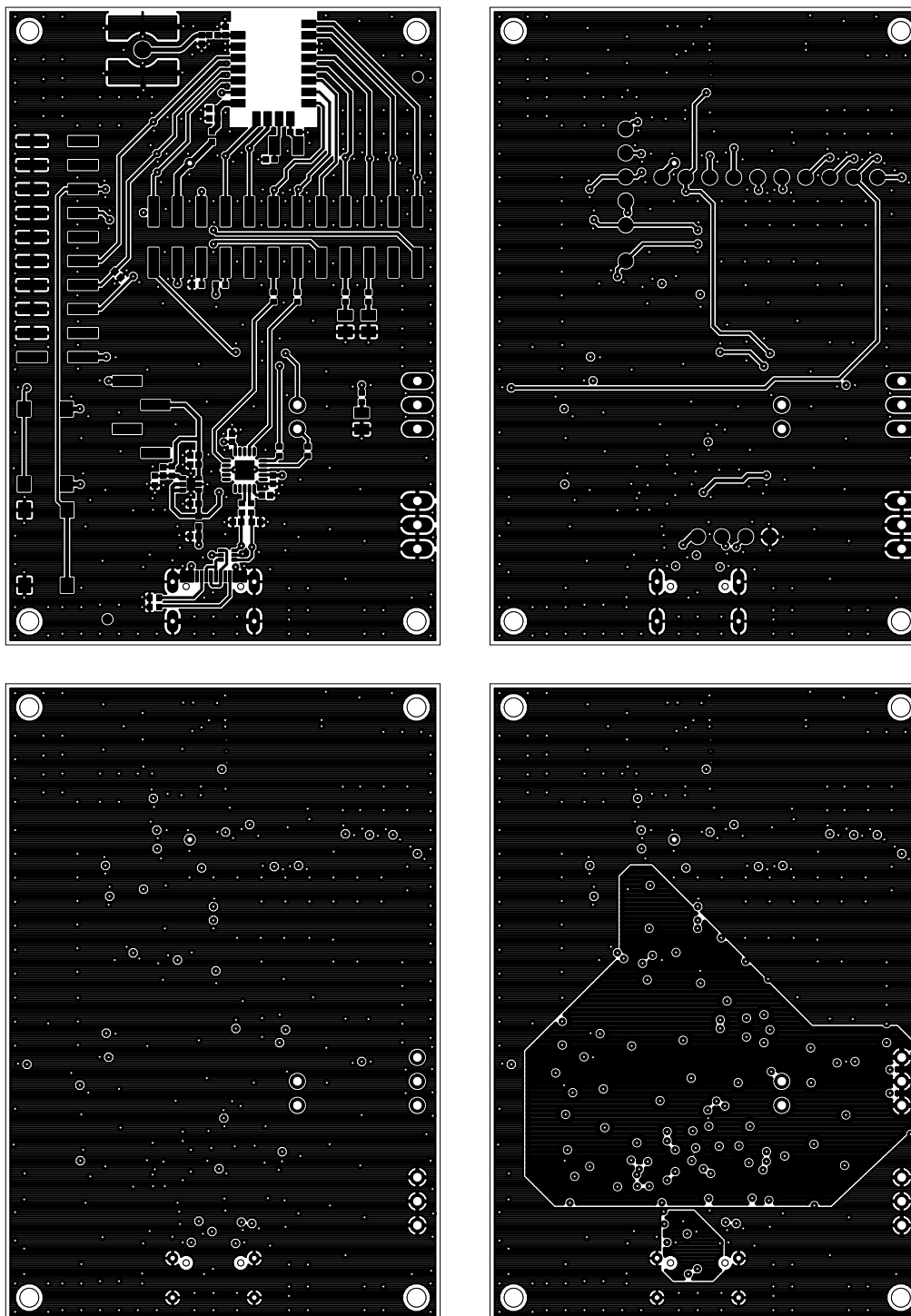


Figure 10: From left to right and from up to down : Top layer, bottom layer, 2nd Layer, 3rd Layer

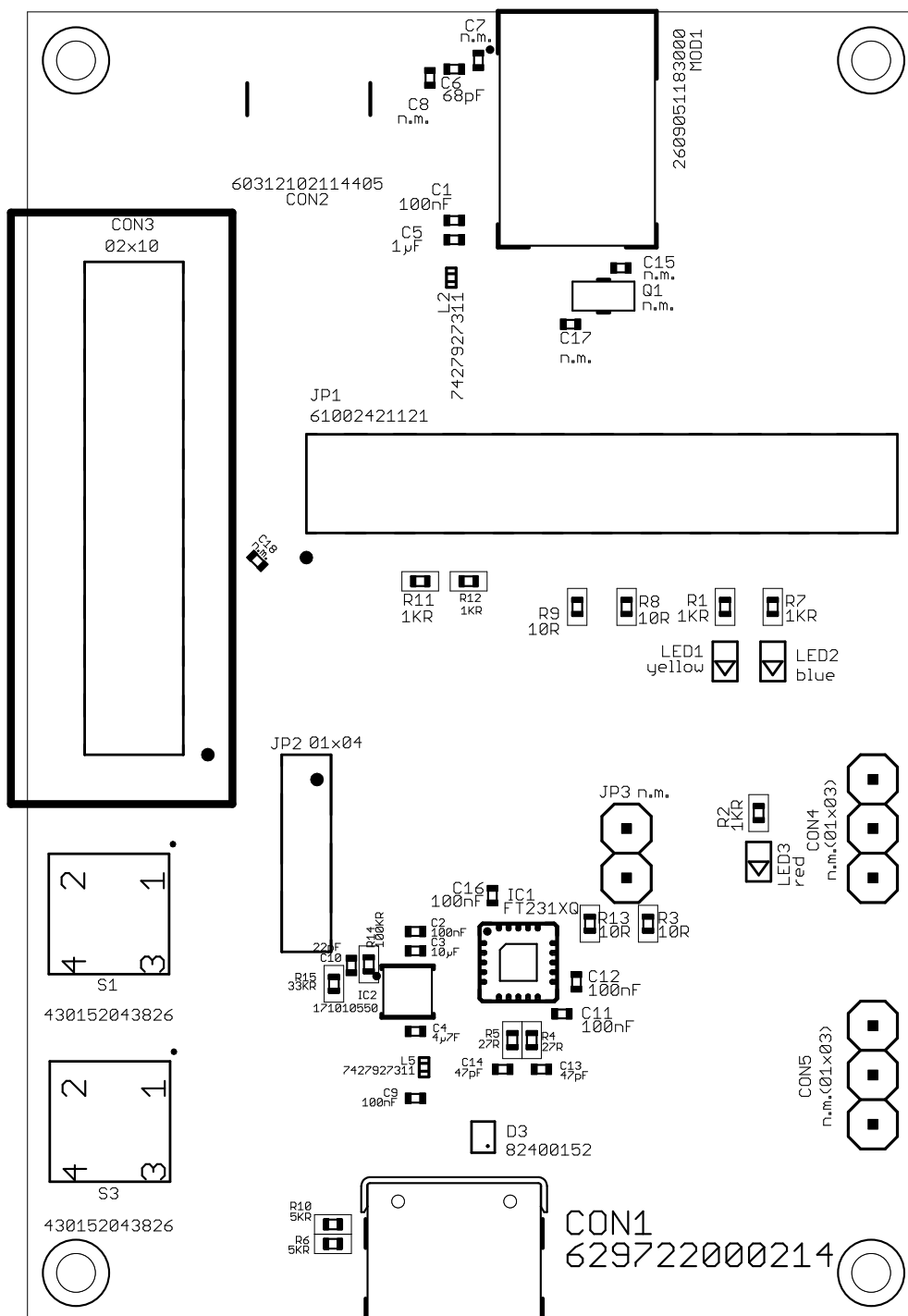


Figure 11: Assembly diagram

5.8 Bill of materials

Part	Value	PACK	NR	MANUFACTURER
C1	100 nF	0402	885012205037	Würth Elektronik eiSos
C2	100 nF	0402	885012205037	Würth Elektronik eiSos
C3	10 µF	0402	885012105020	Würth Elektronik eiSos
C4	47 µF	0402	885012105008	Würth Elektronik eiSos
C5	1 µF	0402	885012105012	Würth Elektronik eiSos
C6	68 pF	0402	885012005030	Würth Elektronik eiSos
C7	n.m.	0402		
C8	n.m.	0402		
C9	100 nF	0402	885012205037	Würth Elektronik eiSos
C10	22 pF	0402	885012005057	Würth Elektronik eiSos
C11	100 nF	0402	885012205037	Würth Elektronik eiSos
C12	100 nF	0402	885012205037	Würth Elektronik eiSos
C13	47 pF	0402	885012005059	Würth Elektronik eiSos
C14	47 pF	0402	885012005059	Würth Elektronik eiSos
C15	n.m.	0402		
C16	100 nF	0402	885012205037	Würth Elektronik eiSos
C17	n.m.	0402		
C18	n.m.	0402		
C19	n.m.	0402		
C20	n.m.	0402		
CON1	629722000214		629722000214	Würth Elektronik eiSos
CON2	60312102114405		60312102114405	Würth Elektronik eiSos
CON3	02x10	SMD	61002021121	Würth Elektronik eiSos
CON4	n.m.(01x03)	THT		Würth Elektronik eiSos
CON5	n.m.(01x03)	THT		Würth Elektronik eiSos
JP1	61002421121		61002421121	Würth Elektronik eiSos
JP2	01x04	SMD	61000418221	Würth Elektronik eiSos
JP3	n.m.			
R1	1 KR	0402	RC0402FR-071KL	Yageo

Table 12: Bill of materials

Part	Value	PACK	NR	MANUFACTURER
R2	1 KR	0402	RC0402FR-071KL	Yageo
R3	10 R	0402	RC0402FR-0710RL	Yageo
R4	27 R	0402	RC0402FR-0727RL	Yageo
R5	27 R	0402	RC0402FR-0727RL	Yageo
R6	5 KR	0402	RC0402FR-075KL	Yageo
R7	1 KR	0402	RC0402FR-071KL	Yageo
R8	10 R	0402	RC0402FR-0710RL	Yageo
R9	10 R	0402	RC0402FR-0710RL	Yageo
R10	5 KR	0402	RC0402FR-075KL	Yageo
R11	1 KR	0402	RC0402FR-071KL	Yageo
R12	1 KR	0402	RC0402FR-071KL	Yageo
R13	10 R	0402	RC0402FR-0710RL	Yageo
R14	100 KR	0402	RC0402FR-07100KL	Yageo
R15	33 KR	0402	RC0402FR-0733KL	Yageo
S1	430152043826	SMD	430152043826	Würth Elektronik eiSos
S3	430152043826	SMD	430152043826	Würth Elektronik eiSos
D3	82400152	WE-TVS_SOT563	82400152	Würth Elektronik eiSos
F1	B4377	SMD	B39871B4377P810	Qualcomm
IC1	FT231XQ	QFN	FT231XQ-R	FTDI
IC2	171010550	SMD	171010550	Würth Elektronik eiSos
L2	7427927311	0402	7427927311	Würth Elektronik eiSos
L5	7427927311	0402	7427927311	Würth Elektronik eiSos
LED1	yellow	0805	150080YS75000	Würth Elektronik eiSos
LED2	blue	0805	150080BS75000	Würth Elektronik eiSos
LED3	red	0805	150080RS75000	Würth Elektronik eiSos
MOD1	2609051183000	SMD	2609051181000	Würth Elektronik eiSos
Q1	n.m.		830009706	Würth Elektronik eiSos

Table 13: Bill of materials cont.

6 Marking

6.1 Lot number

The 15 digit lot number is printed in numerical digits as well as in form of a machine readable bar code. It is divided into 5 blocks as shown in the following picture and can be translated according to the following table.

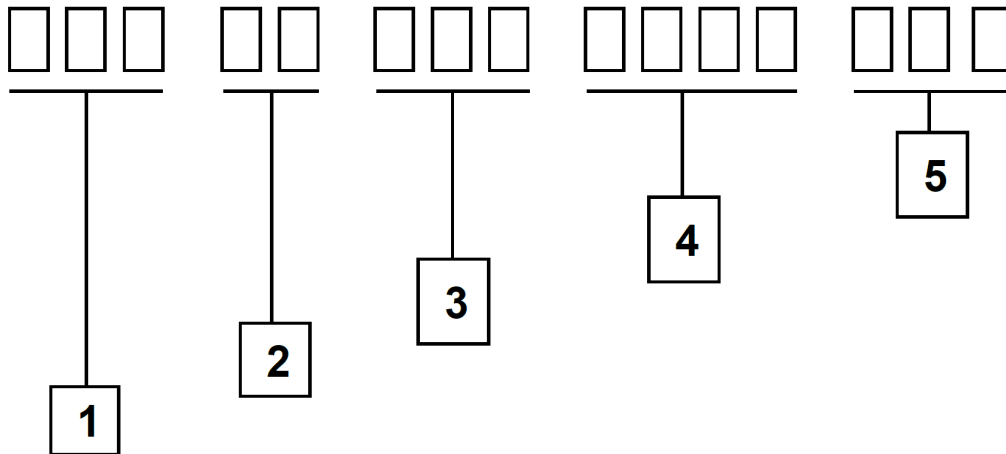


Figure 12: Lot number structure

Block	Information	Example(s)
1	eiSos internal, 3 digits	438
2	eiSos internal, 2 digits	01
3	Radio module hardware version, 3 digits	V2.4 = 024, V12.2 = 122
4	Date code, 4 digits	1703 = week 03 in year 2017, 1816 = week 16 in year 2018
5	Radio module firmware version, 3 digits	V3.2 = 302, V5.13 = 513

Table 14: Lot number details

As the user can perform a firmware update the printed lot number only shows the factory delivery state. The currently installed firmware can be requested from the module using the corresponding product specific command. The firmware version as well as the hardware version are restricted to show only major and minor version not the patch identifier. Block 5 is not applicable for products without firmware.

7 Regulatory compliance information

7.1 European Conformity

Pursuant to Article 1 (2.) of the EU directive 2014/53/EU, Article 1 (2.) the directive does not apply to equipment listed in Annex I (4.): custom-built evaluation kits designed for professionals to be used solely at research and development facilities for such purposes.

7.2 FCC

Pursuant to §2.803 (c) of Title 47 Chapter I Subchapter A Part 2 Subpart I, the evaluation kit falls under the FCC exception. Therefore it is marked as "For evaluation only; not FCC approved for resale".

7.3 Exemption clause

Relevant regulation requirements are subject to change. Würth Elektronik eiSos does not guarantee the accuracy of the before mentioned information. Directives, technical standards, procedural descriptions and the like may be interpreted differently by the national authorities. Equally, the national laws and restrictions may vary with the country. In case of doubt or uncertainty, we recommend that you consult with the authorities or official certification organizations of the relevant countries. Würth Elektronik eiSos is exempt from any responsibilities or liabilities related to regulatory compliance.

Notwithstanding the above, Würth Elektronik eiSos makes no representations and warranties of any kind related to their accuracy, correctness, completeness and/or usability for customer applications. No responsibility is assumed for inaccuracies or incompleteness.

8 References

- [1] Würth Elektronik. Metis-e user manual. <https://www.we-online.de/katalog/de/manual/2609051183000>.
- [2] Würth Elektronik. WE UART Terminal PC tool (Smart Commander). <https://www.we-online.de/wcs-software>.
- [3] Würth Elektronik. Tarvos-e user manual. <https://www.we-online.de/katalog/de/manual/2609051181000>.
- [4] Würth Elektronik. Olis-e user manual. <https://www.we-online.de/katalog/de/manual/2609051182000>.

9 Important notes

The following conditions apply to all goods within the wireless connectivity and sensors product range of Würth Elektronik eiSos GmbH & Co. KG:

General customer responsibility

Some goods within the product range of Würth Elektronik eiSos GmbH & Co. KG contain statements regarding general suitability for certain application areas. These statements about suitability are based on our knowledge and experience of typical requirements concerning the areas, serve as general guidance and cannot be estimated as binding statements about the suitability for a customer application. The responsibility for the applicability and use in a particular customer design is always solely within the authority of the customer. Due to this fact, it is up to the customer to evaluate, where appropriate to investigate and to decide whether the device with the specific product characteristics described in the product specification is valid and suitable for the respective customer application or not. Accordingly, the customer is cautioned to verify that the documentation is current before placing orders.

Customer responsibility related to specific, in particular safety-relevant applications

It has to be clearly pointed out that the possibility of a malfunction of electronic components or failure before the end of the usual lifetime cannot be completely eliminated in the current state of the art, even if the products are operated within the range of the specifications. The same statement is valid for all software source code and firmware parts contained in or used with or for products in the wireless connectivity and sensor product range of Würth Elektronik eiSos GmbH & Co. KG. In certain customer applications requiring a high level of safety and especially in customer applications in which the malfunction or failure of an electronic component could endanger human life or health, it must be ensured by most advanced technological aid of suitable design of the customer application that no injury or damage is caused to third parties in the event of malfunction or failure of an electronic component.

Best care and attention

Any product-specific data sheets, manuals, application notes, PCNs, warnings and cautions must be strictly observed in the most recent versions and matching to the products revisions. These documents can be downloaded from the product specific sections on the wireless connectivity and sensors homepage.

Customer support for product specifications

Some products within the product range may contain substances, which are subject to restrictions in certain jurisdictions in order to serve specific technical requirements. Necessary information is available on request. In this case, the Business Development Engineer (BDM) or the internal sales person in charge should be contacted who will be happy to support in this matter.

Product improvements

Due to constant product improvement, product specifications may change from time to time. As a standard reporting procedure of the Product Change Notification (PCN) according to the JEDEC-Standard, we inform about major changes. In case of further queries regarding the PCN, the Business Development Engineer (BDM), the internal sales person or the technical support team in charge should be contacted. The basic responsibility of the customer as per section 9 and 9 remains unaffected.

All software like "wireless connectivity SDK", "Sensor SDK" or other source codes as well as all PC software tools are not subject to the Product Change Notification information process.

Product life cycle

Due to technical progress and economical evaluation, we also reserve the right to discontinue production and delivery of products. As a standard reporting procedure of the Product Termination Notification (PTN) according to the JEDEC-Standard we will inform at an early stage about inevitable product discontinuance. According to this, we cannot ensure that all products within our product range will always be available. Therefore, it needs to be verified with the Business Development Engineer (BDM) or the internal sales person in charge about the current product availability expectancy before or when the product for application design-in disposal is considered. The approach named above does not apply in the case of individual agreements deviating from the foregoing for customer-specific products. The approach named above does not apply in the case of EV-Boards. EV-Boards may be changed without any notification.

Property rights

All the rights for contractual products produced by Würth Elektronik eiSos GmbH & Co. KG on the basis of ideas, development contracts as well as models or templates that are subject to copyright, patent or commercial protection supplied to the customer will remain with Würth Elektronik eiSos GmbH & Co. KG. Würth Elektronik eiSos GmbH & Co. KG does not warrant or represent that any license, either expressed or implied, is granted under any patent right, copyright, mask work right, or other intellectual property right relating to any combination, application, or process in which Würth Elektronik eiSos GmbH & Co. KG components or services are used.

General terms and conditions

Unless otherwise agreed in individual contracts, all orders are subject to the current version of the "General Terms and Conditions of Würth Elektronik eiSos Group", last version available at www.we-online.com.

10 Terms of Use for Würth Elektronik eiSos GmbH & Co. KG EV-Boards, evaluation kits and evaluation modules

Würth Elektronik eiSos GmbH & Co. KG provide you as a user with technical data (including data sheets), design resources (including reference designs), recommendations for use or other design recommendations, web tools, safety information and other information in the form of evaluation-boards, -kits or -modules (hereinafter jointly referred to as "EVB") in accordance with the terms and conditions contained here. The EVB is provided in the "as is" state. WE disclaims all express and implied warranties, in particular those concerning the suitability for a certain purpose, the absence of defects or non-violation of third-party rights. The EVB is intended for experienced developers to develop

Evaluation board user manual

their application with WE components. As a user, you are solely responsible for: (1) selection of the appropriate WE components for the application, (2) design, validation and testing the application, and (3) assurance that the application meets the applicable standards and all other safety requirements and other applicable requirements. WE may change the EVB without prior notice. WE grants you permission to use the EVB only for developing an application suitable for using WE components. Any other duplication, representation or transfer of the EVB is expressly prohibited. WE does not grant any licenses for the use of the intellectual property rights from WE or third parties. WE is fully indemnified from all claims, damages, costs, losses and liabilities arising from the misuse of this EVB. The WE components are provided in accordance with WE's conditions of sale or other applicable conditions available either at <https://katalog.we-online.com> or in conjunction with such WE components. WE's provision of the EVB does not constitute an extended warranty in relation to the WE components.

General warnings

Do not touch the EVB when it is live, and allow charged components, such as capacitors, to discharge completely before handling the EVB. Depending on the individual application, high voltages can occur on the EVB and some components can reach temperatures above 50 °C. Even after disconnecting the EVB from the power source, these conditions remain for a significant time. Please ensure that the appropriate safety precautions are taken when installing and operating this EVB, as one of the following may occur if you handle or use this EVB without observing the relevant safety precautions: - Death - Serious injury - Electric shock - Electric burns - Severe heat burns -

When using the EVB, you undertake to read the instructions for use in full together with the relevant information supplied and/or available on the homepage www.we-online.de/wcs-manuals before putting this EVB into operation. The following points have to be observed in particular:

- Do not touch the EVB while it is live.
- The EVB must be fully assembled and all devices to be tested must be connected before voltage is applied to the EVB.
- The EVB should never be left unattended during operation.
- Capacitors must be completely discharged. The capacitors must be actively discharged using a suitable resistor.

Protection against static electricity

Use the unpackaged product only in ESD protected areas. Wear the ESD personal protective equipment prescribed for these areas. Ground all conductive components, including personnel, as prescribed in ESD protected areas. Ensure that the product is only used by trained personnel.

Purpose and use

The EVB is not a finished product and is not intended for general use by the consumer. The EVB is intended exclusively for use in the evaluation of WE components in the lab or in development environments by highly qualified technicians or engineers, familiar with the risks involved in handling electrical or mechanical components, systems and subsystems. The use of the EVB is your full and independent responsibility. The EVB is expressly not intended to be installed in a terminal device or to be part of a terminal device in whole or in part. WE reserves the right, at its own discretion, to make corrections, improvements, adjustments or other changes to the EVB or to discontinue the EVB. The EVB is not intended for use in devices and applications for which a higher safety and reliability standard is prescribed. It is also not approved for use in safety-relevant applications or where personal injury or fatal consequences must be expected in the event of failure.

Operation of the EVB

The EVB may only be operated within the specifications and environmental parameters recommended by WE, as described in the instructions for use. Exceeding the specified parameters (including, but not limited to, input and output voltage, current, power, and ambient conditions) may result in damage to property. If you have questions about these electrical parameters, please contact WE at (regulatory-compliance@we-online.com) prior to connecting peripheral electronics (including the input voltage and intended loads). Any load outside a certain power range may lead to negative consequences, including, but not limited to, unintended or inaccurate evaluations or possibly permanent damage to the EVB or the electronics connected to it. Please ensure that the appropriate safety precautions are taken when working with the EVB, as serious injuries, including severe or even fatal injuries from electric shock or electric burns, may occur if you do not follow the appropriate safety precautions. Under no circumstances should the EVB be touched while live. When the EVB is connected to a power source, some of its components are electrically charged and/or have temperatures above 50 °C. This condition also applies for a short time after disconnecting from the supply voltage until the capacitors are completely discharged and hot components have cooled down. These components include connectors, linear regulators, switching transistors, heat sinks, resistors, diodes, inductors and other components, which can be identified from the documentation in the instructions for use. As with all electronic lab work, only qualified persons with knowledge of electronic performance evaluation, measurement and diagnostic tools, should use the EVB.

Hazards and warnings

Before putting the EVB into operation, please read the instructions for use and especially the various hazards and warnings described therein. The instructions for use contain important safety information on voltages and temperatures. You take full responsibility and liability for the proper and safe handling of the EVB. You agree to comply with all safety requirements, rules and regulations related to the use of the EVB. You also take full responsibility for: (1) establishing safeguards to ensure that the use of the EVB does not cause damage to property, personal injury or death, even if the EVB does not function as described, intended or expected, (2) the test setup in which the EVB is integrated, all safety requirements, rules and regulations and also that no damage to property, personal injury or other hazardous situation occurs even if the EVB fails, and (3) ensuring the safety of all activities performed by you or your employees when using the EVB. In particular, this means that the technical rules VDE [German Electrical Engineering, Electronic and Information Technology Association] 0105-100 and BGI [German trade association information] 891 (or corresponding applicable safety regulations outside Germany) for the operation of electrical test setups must be observed, the test area is protected against unauthorized access or accidental touching, current limitations, and emergency stop mechanisms are functional and test setups are never operated unattended. If you have any questions about the safe use of the EVB, please contact WE at regulatory-compliance@we-online.com for more information.

Your responsibility with regard to the applicable laws

- You are responsible for being sufficiently informed about and complying with all international, national, state and local applicable laws, rules and regulations that apply to the handling or use of the EVB by you or your employees.
- The EVB generates, uses and radiates radio frequency energy, but has not been tested for conformity with the limits applicable to the product category, which are applicable according to the European Union regulations for protection against radio frequency interference. Operation of the EVB may cause interference with radio communication. In this case, the costs incurred for necessary measures to remedy the interference are to be borne by the user.

As the EVB is not a finished product, it may not comply with applicable regulatory, safety or certification standards that are normally as-

sociated with other products, such as Directive 2011/65/EC of the European Parliament and of the Council of 8 June 2011 on the restriction of the use of hazardous substances and Directive 2002/96/EC on waste electrical and electronic equipment (WEEE). You take full responsibility for compliance with such standards that apply to the EVB. You also take responsibility for the proper disposal of the components and materials of the EVB.

Exclusion of further rights and rights of use for intellectual property of EVB

The sale of an EVB does not constitute the granting by WE of any license or other right of any kind - expressly or implicitly - including, but not limited to, any patent, copyright, trademark or other proprietary rights. All rights from such patent, copyright, trademark or other proprietary rights are expressly reserved by WE. The EVB must not be used in any manner that directly or indirectly infringes any patent, copyright, trademark or other proprietary rights of WE.

Warranty of EVB

WE ensures that the EVB meets the specifications given in the instructions for use (within the deviations stated therein) for a period of 12 months from the date of purchase and functions in accordance with the instructions for use. On the basis of the underlying statutory provisions, WE shall rectify defects or offer free replacement of the EVB to which damage occurs that is evidently attributable to a defect for which WE is responsible and is at fault. A warranty claim is subject to the user having complied with the statutory duties of inspection and notification of defects and that the EVB has been received by WE no later than ten (10) days after expiry of the warranty period. This warranty is not transferable to others. This warranty does not apply to defects or impairments in performance resulting from incorrect use, use contrary to WE's instructions, improper installation, improper operation or misuse. WE accepts no liability whatsoever for the failure of equipment or other items not manufactured by or for WE, including, but not limited to, equipment or items to which the EVB is attached or for which the EVB is used. WE DOES NOT GRANT ANY WARRANTIES OR ASSURANCES WHATSOEVER, EXPRESS OR IMPLIED, WITH RESPECT TO THE EVB, INCLUDING, BUT NOT LIMITED TO, ANY IMPLIED WARRANTIES OF MARKETABILITY OR SUITABILITY FOR A PARTICULAR PURPOSE.

Limitation of liability for EVB

WE'S OVERALL LIABILITY FOR DAMAGE CAUSED BY WE IS LIMITED TO DAMAGE THAT TYPICALLY OCCURS. WE DOES NOT ACCEPT ANY LIABILITY FOR LOSS OF PROFIT, CONSEQUENTIAL OR SPECIAL LOSSES, OR SPECIAL, INDIRECT, INCIDENTAL AND CONSEQUENTIAL DAMAGE. HOWEVER, THIS LIMITATION OF LIABILITY DOES NOT APPLY IN THE CASE OF INTENTIONAL OR GROSSLY NEGLIGENT ACTS AND FOR THE DAMAGE RESULTING FROM LOSS OF LIFE, PHYSICAL INJURY, HARM TO HEALTH OR IN CASE OF LEGAL MANDATORY LIABILITY [AS IN GERMAN PRODUCT LIABILITY LAW, ProdHaftG].

11 Legal notice

Exclusion of liability

Würth Elektronik eiSos GmbH & Co. KG considers the information in this document to be correct at the time of publication. However, Würth Elektronik eiSos GmbH & Co. KG reserves the right to modify the information such as technical specifications or functions of its products or discontinue the production of these products or the support of one of these products without any written announcement or notification to customers. The customer must make sure that the information used corresponds to the latest published information. Würth Elektronik eiSos GmbH & Co. KG does not assume any liability for the use of its products. Würth Elektronik eiSos GmbH & Co. KG does not grant licenses for its patent rights or for any other of its intellectual property rights or third-party rights.

Notwithstanding anything above, Würth Elektronik eiSos GmbH & Co. KG makes no representations and/or warranties of any kind for the provided information related to their accuracy, correctness, completeness, usage of the products and/or usability for customer applications. Information published by Würth Elektronik eiSos GmbH & Co. KG regarding third-party products or services does not constitute a license to use such products or services or a warranty or endorsement thereof.

Suitability in customer applications

The customer bears the responsibility for compliance of systems or units, in which Würth Elektronik eiSos GmbH & Co. KG products are integrated, with applicable legal regulations. Customer acknowledges and agrees that it is solely responsible for compliance with all legal, regulatory and safety-related requirements concerning its products, and any use of Würth Elektronik eiSos GmbH & Co. KG components in its applications, notwithstanding any applications-related information or support that may be provided by Würth Elektronik eiSos GmbH & Co. KG. Customer represents and agrees that it has all the necessary expertise to create and implement safeguards which anticipate dangerous consequences of failures, monitor failures and their consequences lessen the likelihood of failures that might cause harm and take appropriate remedial actions. The customer will fully indemnify Würth Elektronik eiSos GmbH & Co. KG and its representatives against any damages arising out of the use of any Würth Elektronik eiSos GmbH & Co. KG components in safety-critical applications.

Trademarks

AMBER wireless is a registered trademark of Würth Elektronik eiSos GmbH & Co. KG. All other trademarks, registered trademarks, and product names are the exclusive property of the respective owners.

Usage restriction

Würth Elektronik eiSos GmbH & Co. KG products have been designed and developed for usage in general electronic equipment only. This product is not authorized for use in equipment where a higher safety standard and reliability standard is especially required or where a failure of the product is reasonably expected to cause severe personal injury or death, unless the parties have executed an agreement specifically governing such use. Moreover, Würth Elektronik eiSos GmbH & Co. KG products are neither designed nor intended for use in areas such as military, aerospace, aviation, nuclear control, submarine, transportation (automotive control, train control, ship control), transportation signal, disaster prevention, medical, public information network etc. Würth Elektronik eiSos GmbH & Co. KG must be informed about the intent of such usage before the design-in stage. In addition, sufficient reliability evaluation checks for safety must be performed on every electronic component, which is used in electrical circuits that require high safety and reliability function or performance. By using Würth Elektronik eiSos GmbH & Co. KG products, the customer agrees to these terms and conditions.

12 License terms

These License terms will take effect upon the purchase and usage of the Würth Elektronik eiSos GmbH & Co. KG wireless connectivity products. You hereby agree that these license terms are applicable to the product and the incorporated software, firmware and source codes (collectively, "Software") made available by Würth Elektronik eiSos in any form, including but not limited to binary, executable or source code form. The software included in any Würth Elektronik eiSos wireless connectivity product is purchased to you on the condition that you accept the terms and conditions of these license terms. You agree to comply with all provisions under these license terms.

Limited license

Würth Elektronik eiSos hereby grants you a limited, non-exclusive, non-transferable and royalty-free license to use the software and under the conditions that will be set forth in these license terms. You are free to use the provided software only in connection with one of the products from Würth Elektronik eiSos to the extent described in these license terms. You are entitled to change or alter the source code for the sole purpose of creating an application embedding the Würth Elektronik eiSos wireless connectivity product. The transfer of the source code to third parties is allowed to the sole extent that the source code is used by such third parties in connection with our product or another hardware provided by Würth Elektronik eiSos under strict adherence of these license terms. Würth Elektronik eiSos will not assume any liability for the usage of the incorporated software and the source code. You are not entitled to transfer the source code in any form to third parties without prior written consent of Würth Elektronik eiSos.

You are not allowed to reproduce, translate, reverse engineer, decompile, disassemble or create derivative works of the incorporated software and the source code in whole or in part. No more extensive rights to use and exploit the products are granted to you.

Usage and obligations

The responsibility for the applicability and use of the Würth Elektronik eiSos wireless connectivity product with the incorporated firmware in a particular customer design is always solely within the authority of the customer. Due to this fact, it is up to you to evaluate and investigate, where appropriate, and to decide whether the device with the specific product characteristics described in the product specification is valid and suitable for your respective application or not.

You are responsible for using the Würth Elektronik eiSos wireless connectivity product with the incorporated firmware in compliance with all applicable product liability and product safety laws. You acknowledge to minimize the risk of loss and harm to individuals and bear the risk for failure leading to personal injury or death due to your usage of the product.

Würth Elektronik eiSos' products with the incorporated firmware are not authorized for use in safety-critical applications, or where a failure of the product is reasonably expected to cause severe personal injury or death. Moreover, Würth Elektronik eiSos' products with the incorporated firmware are neither designed nor intended for use in areas such as military, aerospace, aviation, nuclear control, submarine, transportation (automotive control, train control, ship control), transportation signal, disaster prevention, medical, public information network etc. You shall inform Würth Elektronik eiSos about the intent of such usage before design-in stage. In certain customer applications requiring a very high level of safety and in which the malfunction or failure of an electronic component could endanger human life or health, you must ensure to have all necessary expertise in the safety and regulatory ramifications of your applications. You acknowledge and agree that you are solely responsible for all legal, regulatory and safety-related requirements concerning your products and any use of Würth Elektronik eiSos' products with the incorporated firmware in such safety-critical applications, notwithstanding any applications-related information or support that may be provided by Würth Elektronik eiSos. **YOU SHALL INDEMNIFY WÜRTH ELEKTRONIK EISOS AGAINST ANY DAMAGES ARISING OUT OF THE USE OF WÜRTH ELEKTRONIK EISOS' PRODUCTS WITH THE INCORPORATED FIRMWARE IN SUCH SAFETY-CRITICAL APPLICATIONS.**

Ownership

The incorporated firmware created by Würth Elektronik eiSos is and will remain the exclusive property of Würth Elektronik eiSos.

Firmware update(s)

You have the opportunity to request the current and actual firmware for a bought wireless connectivity product within the time of warranty. However, Würth Elektronik eiSos has no obligation to update a modules firmware in their production facilities, but can offer this as a service on request. The upload of firmware updates falls within your responsibility, e.g. via ACC or another software for firmware updates. Firmware updates will not be communicated automatically. It is within your responsibility to check the current version of a firmware in the latest version of the product manual on our website. The revision table in the product manual provides all necessary information about firmware updates. There is no right to be provided with binary files, so called "firmware images", those could be flashed through JTAG, SWD, Spi-Bi-Wire, SPI or similar interfaces.

Disclaimer of warranty

THE FIRMWARE IS PROVIDED "AS IS". YOU ACKNOWLEDGE THAT WÜRTH ELEKTRONIK EISOS MAKES NO REPRESENTATIONS AND WARRANTIES OF ANY KIND RELATED TO, BUT NOT LIMITED TO THE NON-INFRINGEMENT OF THIRD PARTIES' INTELLECTUAL PROPERTY RIGHTS OR THE MERCHANTABILITY OR FITNESS FOR YOUR INTENDED PURPOSE OR USAGE. WÜRTH ELEKTRONIK EISOS DOES NOT WARRANT OR REPRESENT THAT ANY LICENSE, EITHER EXPRESS OR IMPLIED, IS GRANTED UNDER ANY PATENT RIGHT, COPYRIGHT, MASK WORK RIGHT, OR OTHER INTELLECTUAL PROPERTY RIGHT RELATING TO ANY COMBINATION, MACHINE, OR PROCESS IN WHICH THE WÜRTH ELEKTRONIK EISOS' PRODUCT WITH THE INCORPORATED FIRMWARE IS USED. INFORMATION PUBLISHED BY WÜRTH ELEKTRONIK EISOS REGARDING THIRD-PARTY PRODUCTS OR SERVICES DOES NOT CONSTITUTE A LICENSE FROM WÜRTH ELEKTRONIK EISOS TO USE SUCH PRODUCTS OR SERVICES OR A WARRANTY OR ENDORSEMENT THEREOF.

Limitation of liability

Any liability not expressly provided by Würth Elektronik eiSos shall be disclaimed.

You agree to hold us harmless from any third-party claims related to your usage of the Würth Elektronik eiSos' products with the incorporated firmware, software and source code. Würth Elektronik eiSos disclaims any liability for any alteration, development created by you or your customers as well as for any combination with other products.

Applicable law and jurisdiction

Applicable law to these license terms shall be the laws of the Federal Republic of Germany. Any dispute, claim or controversy arising out of or relating to these license terms shall be resolved and finally settled by the court competent for the location of Würth Elektronik eiSos registered

office.

Severability clause

If a provision of these license terms is or becomes invalid, unenforceable or null and void, this shall not affect the remaining provisions of the terms. The parties shall replace any such provisions with new valid provisions that most closely approximate the purpose of the terms.

Miscellaneous

Würth Elektronik eiSos reserves the right at any time to change these terms at its own discretion. It is your responsibility to check at Würth Elektronik eiSos homepage for any updates. Your continued usage of the products will be deemed as the acceptance of the change.

We recommend you to be updated about the status of new firmware and software, which is available on our website or in our data sheet and manual, and to implement new software in your device where appropriate.

By ordering a product, you accept these license terms in all terms.

List of Figures

1	Photo of the EV-Board	6
2	Block diagram	8
3	Jumpers, default placement	9
4	Connectors	11
5	Example without filtering	13
6	Example with filtering	14
7	Buttons	16
8	LFXO mounting	18
9	Reference design: Schematic	19
10	From left to right and from up to down : Top layer, bottom layer, 2nd Layer, 3rd Layer	20
11	Assembly diagram	21
12	Lot number structure	24

List of Tables

3	Compatibility	5
4	Order codes	5
5	Content Metis-e EV-Kit	5
6	Content Olis-e EV- Kit	5
7	Content Tarvos-e EV- Kit	6
8	Jumper JP1: Module pins available and connectable to some standard functions	10
9	Jumper JP2: LDO separable	10
10	Connector overview	12
11	Connector CON3	15
12	Bill of materials	22
13	Bill of materials cont.	23
14	Lot number details	24

**Contact**

Würth Elektronik eiSos GmbH & Co. KG
Division Wireless Connectivity & Sensors

Max-Eyth-Straße 1
74638 Waldenburg
Germany

Tel.: +49 651 99355-0
Fax.: +49 651 99355-69
www.we-online.com/wireless-connectivity

WÜRTH ELEKTRONIK MORE THAN YOU EXPECT